



CONOCLINIUM (EUPATORIUM) GREGGII BOOTHILL™

OUTSTANDING FEATURES: The fine-textured green foliage and showy lavender-blue flowers of this versatile perennial make it a most attractive addition to the southwestern palette. As an added bonus, it is a butterfly magnet when in bloom!

DESCRIPTION: *Eupatorium greggii* **Boothill**™ (Trademark by Mountain States Wholesale Nursery) is a small, herbaceous perennial growing to about 2 feet tall and 2-3 feet wide. Its stems can either be strong and upright, or weak and trailing along the ground, depending on the growing conditions. When grown hard (not overwatered or over fertilized) or when grown in full sun, the stems are stronger and more upright. Its light green, fine-textured leaves resemble those of *Verbena pulchella*. Fuzzy lavender-blue flowers occur in tight clusters at the ends of branches in the late spring, summer and fall. They are excellent for attracting butterflies. *Eupatorium greggii* has rhizomes (underground stems), so even if it burns back to the ground or is pruned back severely, it recovers readily.

CULTURE/MAINTENANCE: This plant is root hardy to at least 0° F, although the foliage will burn back in the mid-20's F. Ideally, this plant should be placed where it will receive afternoon shade. If planted in full sun it will require ample supplemental water to look good, especially in the summer. *Eupatorium greggii* **Boothill**™ is very fast growing, reaching a size of 2 feet tall and 2 feet wide in 1 or 2 years from a 1 gallon. This plant should be cut back nearly to the ground in late winter or early spring to remove any frost damaged foliage, and to encourage bushiness.

IDENTIFICATION: *Eupatorium greggii* **Boothill**™ is very easily distinguished from any other *Eupatorium* species by its combination of highly divided leaves and lavender-blue flowers. The flowers of this species are very similar to those of *Ageratum corymbosum* **Butterfly Blue**™, but plants are readily separated by the divided leaves of the *Eupatorium*.

LANDSCAPE APPLICATION:

Eupatorium greggii **Boothill**™ is an ideal perennial for providing color under desert trees. Some suggestions for shade trees are *Acacia smallii*, *Acacia stenophylla*, *Cercidium praecox*, *Cercidium* hybrid 'Desert Museum', and *Prosopis* species. While filtered shade is ideal, too much shade will reduce flowering, and cause the plants to be leggy. The lavender flowers of this plant look great in combination with *Gaura lindheimeri*, *Penstemon* species, and *Salvia* species. *Eupatorium greggii* **Boothill**™ flowers attract many types of butterflies.



PRECAUTIONS: We have no information on the rabbit resistance of *Eupatorium greggii* **Boothill**™. Any feedback from our customers would be greatly appreciated! Be sure to provide plants with some morning sun and afternoon shade. This proper balance will encourage ample flower production, while reducing the amount of supplemental water required.

P
E
R
E
N
N
I
A
L

CONOCLINIUM (EUPATORIUM) GREGGII
BOOTHILL™



PERENNIAL



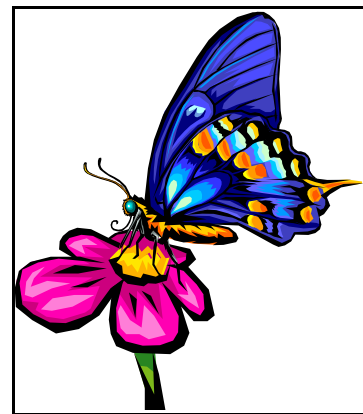
A butterfly feeds on **Boothill™**, which is planted with *Gaura lindheimeri*.



Close-up of the flowers of *Eupatorium greggii*.

AT A GLANCE SUMMARY

SIZE (HEIGHT x WIDTH)	2 Feet x 2-3 Feet
FLOWER COLOR	Lavender-blue
FLOWER SEASON	Summer, fall
EXPOSURE	Full sun, part shade
WATER	Moderate
GROWTH RATE	Fast
HARDINESS	Root hardy to 0° F USDA 7
PRUNING	Shear in late winter
HARDY IN THESE CITIES	Phoenix, Tucson, Palm Desert, San Diego, Los Angeles, Las Vegas, Albuquerque, El Paso, San Antonio, Dallas, South Texas, Austin, West Texas



ATTRACTS
BUTTERFLIES!

For more information, call: toll-free (800) 840-8509 or (623) 247-8509
Mountain States Wholesale Nursery, PO Box 2500, Litchfield Park, AZ 85340-2500