



SALVIA FARINACEA TEXAS VIOLET™

OUTSTANDING FEATURES: **Texas Violet™** Sage has stunning flower spikes, with rich violet flowers contrasting with the silver-white calyx. The dense nature of the flower spikes and long bloom season combine to make this plant a winner. This clone has a relaxed, sprawling silhouette compared to the forms commonly grown as bedding plants, and looks at home in desert landscapes.

DESCRIPTION: *Salvia farinacea* **Texas Violet™** (Trademark name by Mountain States Wholesale Nursery) is a perennial plant with herbaceous stems that can grow to 3 feet tall and wide. Its long, narrow, bright green leaves measure 2-4 inches long and about 1/2 inch wide. The spikes of densely packed, rich violet-blue flowers can grow to 10 inches long. Individual flowers are about 3/4 inch long and have a showy broad, flaring lower lip. These flowers occur in tight, dense clusters, with as many as 30 flowers in each cluster. The calyx is densely pubescent with soft, white hairs and is tinged with purple at the tip. Flowering begins in the early spring and continues into early fall.

CULTURE/MAINTENANCE: *Salvia farinacea* **Texas Violet™** is a perennial plant that usually dies to the ground in winter and recovers quickly in the spring. It is root hardy to at least 0° F. The stems are very fast growing, reaching 3 feet long by mid to late spring. This plant will survive on very little supplemental water, but grows faster and flowers longer if watered on a regular basis during the summer months. This clone is not particular about soil type, growing well in both sandy and heavy clay soils. To keep this plant looking its best, remove spent flower spikes, and cut the stems back to ground level in the winter.

IDENTIFICATION: *Salvia farinacea* **Texas Violet™** is readily separated from its bedding plant cousins by its looser, more relaxed growth form.

LANDSCAPE APPLICATION: *Salvia farinacea* **Texas Violet™** blends well with many other low water use plants in any zone of a xeriscape. Its loose form allows it to blend well with desert plants in the transition or outer zones, yet it is lush enough to work in the mini-oasis. It looks great in combination with white, red, orange or yellow-flowering plants such as *Melampodium leucanthum*, *Cuphea llavea*, *Calliandra californica*, *Zexmenia hispida* **Devil's River™**, *Zinnia grandiflora*, and *Hymenoxys acaulis*. Since it is tolerant of light shade, **Texas Violet™** can be grown at the base of small trees such as *Bauhinia lunarioides* (syn. *B. congesta*), *Caesalpinia cacalaco*, *Eysenhardtia orthocarpa*, and *Fraxinus greggii*.



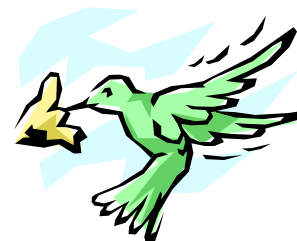
PRECAUTIONS: *Salvia farinacea* **Texas Violet™** does not have any known draw backs. Insects and rabbits do not seem to be favor it.

P
E
R
E
N
N
I
A
L

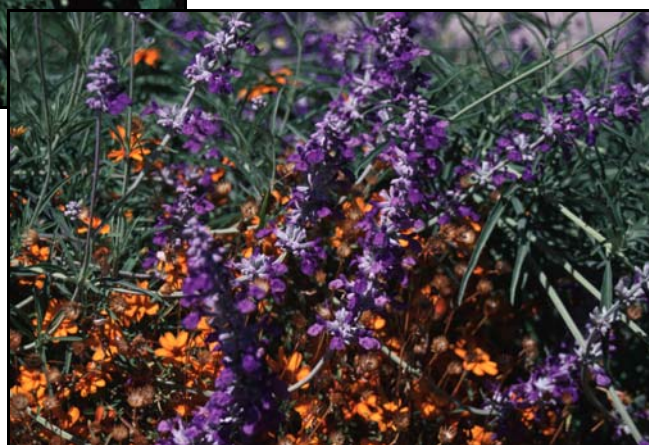
SALVIA FARINACEA
TEXAS VIOLET™



PERENNIAL



ATTRACTS
HUMMINGBIRDS!



Close up of the flower spike of *Salvia farinacea* Texas Violet™.

AT A GLANCE SUMMARY

SIZE (HEIGHT x WIDTH)	3 feet x 3 feet
FLOWER COLOR	Violet-blue
FLOWER SEASON	Spring through fall
EXPOSURE	Full sun, part shade
WATER	Low to moderate
GROWTH RATE	Fast
HARDINESS	0° F USDA 7
PRUNING	Shear in winter, trim off old flower spikes as they fade
HARDY IN THESE CITIES	Tucson, Phoenix, Palm Desert, Los Angeles, San Diego, El Paso, San Antonio, Austin, Dallas, Albuquerque

For more information, call: toll-free (800) 840-8509 or (623) 247-8509
Mountain States Wholesale Nursery, PO Box 2500, Litchfield Park, AZ 85340-2500