



SALVIA GREGGII AUTUMN SAGE

OUTSTANDING FEATURES: The compact size, rich green leaves, long bloom period, and profusion of hummingbird-attracting flowers have made Autumn Sage a mainstay in many Southwestern gardens.

DESCRIPTION: *Salvia greggii* is a small evergreen shrub to 3 feet tall and wide. The small, dark green leaves have a slightly sticky coating. Showy, 1 inch long flowers appear on 6-10 inch long spikes throughout the spring, summer, and fall. Autumn Sage is available in a wide range of flower colors, including fuchsia, red, purple, orange, yellow, salmon, and white. The hot pink or fuchsia-flowering plants seem to be the most heat tolerant.

CULTURE/MAINTENANCE: *Salvia greggii* is hardy to at least 0° F and maybe lower. It is drought tolerant, surviving on 10-12 inches of annual rainfall, but looks better with supplemental water every week during the hot months. Autumn Sage is fast growing, attaining a mature size in two growing seasons. It grows best when placed in full sun (in mid- and high elevation desert areas) or light shade (in low elevation desert areas). *Salvia greggii* should be placed in a soil that has good drainage. The new growth is susceptible to spittle bug, which looks like a white, gooey blob near the tips of the stems. This is easily controlled by pruning off the infected stems and discarding them. *Salvia greggii* does benefit from severe pruning in mid-summer and late winter.



IDENTIFICATION: *Salvia greggii* is easily recognized by its flowers and foliage. There are several forms of *Salvia greggii* available in the landscape trade. Many of these are flower color variations, some of which may not be as heat tolerant as others. The hot pink-flowering clone *Salvia greggii* **Sierra Linda**™ (trademark name by Mountain States Wholesale Nursery) seems to tolerate the heat of low deserts fairly well, if planted in a shady location.

LANDSCAPE APPLICATION: In middle and high deserts, Autumn Sage can be planted in full sun or part shade. In low deserts, it is only recommended for shady locations, and even then it is not completely reliable. We do not recommend it for commercial applications in the Phoenix area, although at the slightly higher elevations of Carefree it seems to flourish. *Salvia greggii* ideal for massing under desert trees. It can also be used tucked between boulders or nestled at the base of large accent plants.

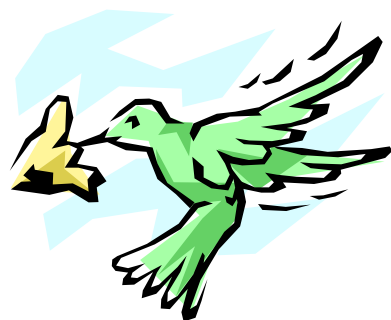
PRECAUTIONS: Good news for gardeners; this plant is not bothered by rabbits! In hot locations, some supplemental nitrogen fertilizer in the summer months seems to help this plant survive the summer heat.

S
H
R
U
B

SALVIA GREGGII
AUTUMN SAGE



SHRUB



ATTRACTS
HUMMINGBIRDS!

AT A GLANCE SUMMARY

SIZE (HEIGHT x WIDTH)	3 feet x 3 feet
FLOWER COLOR	Pink, red, white, purple, orange, yellow
FLOWER SEASON	Spring, summer, fall
EXPOSURE	Full sun (high deserts) Part shade (low deserts)
WATER	Low to moderate
GROWTH RATE	Fast
HARDINESS	0° F USDA 7
PRUNING	Shear in late winter and mid- summer
HARDY IN THESE CITIES	Tucson, Phoenix, San Diego, Los Angeles, Palm Desert, Las Vegas, Albuquerque, El Paso, San Antonio, Austin, Dallas, West Texas

For more information, call: toll-free (800) 840-8509 or (623) 247-8509
Mountain State Wholesale Nursery, PO Box 2500, Litchfield Park, AZ 85340-2500